



User manual



SmartPSS

SmartPSS software is used for viewing, playing back and exporting video footage from IP video surveillance systems.

Manual includes

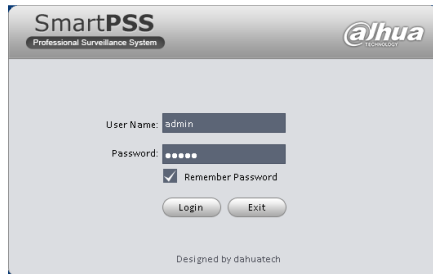
- Logging In
- Starting Live View
- Adding a Custom View
- Using Digital Zoom
- Initiating Live View on Start up
- Exporting Footage

Logging In

- 1) Open Smart PSS



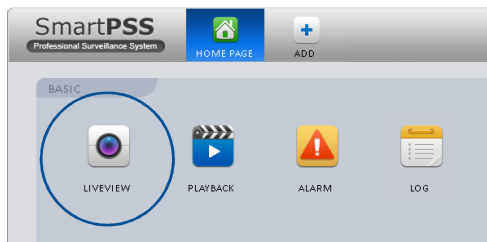
- 2) Use your username and password to login.



Note: Select "Remember Password" to automatically login upon start up.

Starting Live View

- 1) From the home page select the "Liveview" menu.

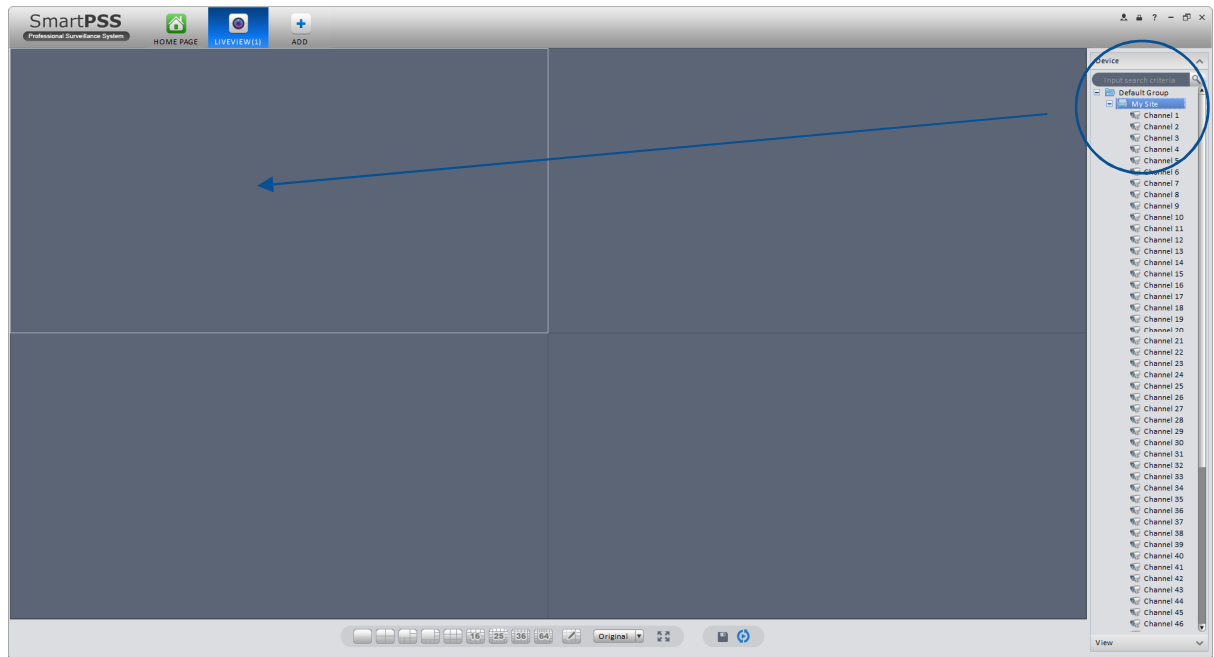


- 2) Before viewing cameras select the view you wish to use. You may select the single image view to display one camera at one time or select other image views to display up to 64 cameras on the screen at one time.

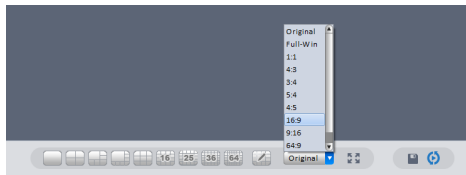


- 3) Once your view is selected, select and drag individual cameras from the devices menu on the right of screen onto each tile of your layout.

Tip: To add multiple cameras to your layout simply select your site name and drag it across to the first available tile in the window.

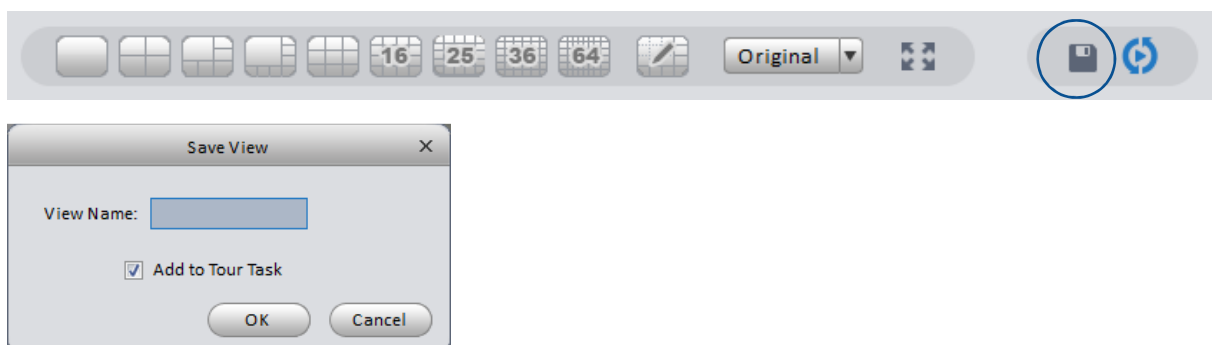


Tip: Select the view drop down box and select 16:9 to view cameras in the preferred widescreen mode.

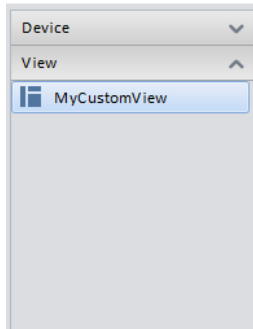


Adding a Custom View

- 1) To save a layout that you may use on a regular basis select the save icon on the bottom of the screen. A "Save View" dialogue box will appear, enter a name for your view and select OK.



- 2) Once your view is saved you may select it from the view menu on the right of screen.



Tip: If you are viewing high resolution Megapixel cameras across a Local Area Network or Wide Area Network and notice performance issues, a greater viewing experience will be achieved by selecting only one camera at a time; up to a maximum of four cameras. This number can be increased if you have SmartPSS installed on a computer with a high powered CPU and RAM.

Using Digital Zoom

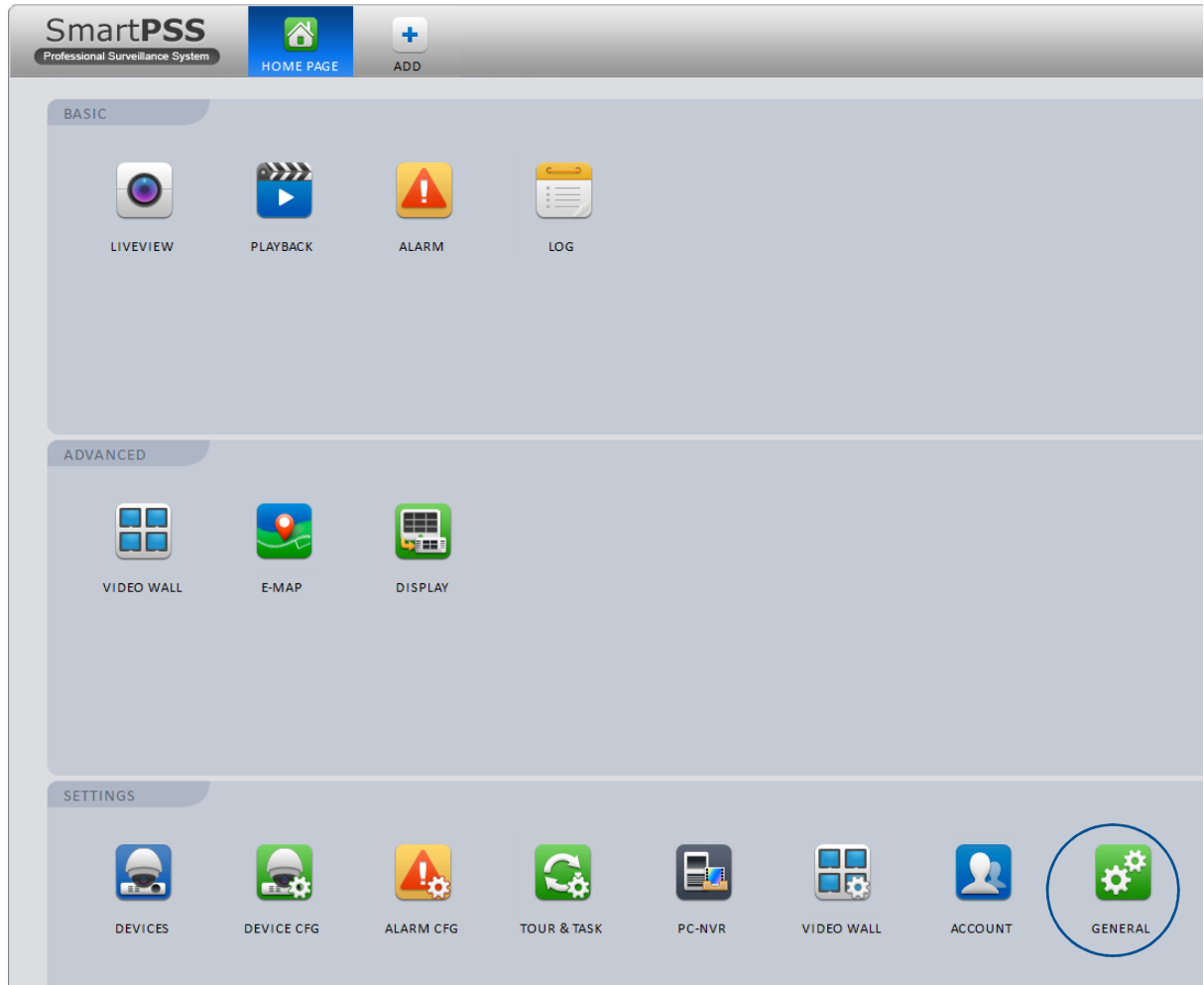
- 1) Pause your cursor in the top right corner of the video tile you wish to zoom.
- 2) Select the zoom icon and use your mouse scroll wheel to zoom in and out.



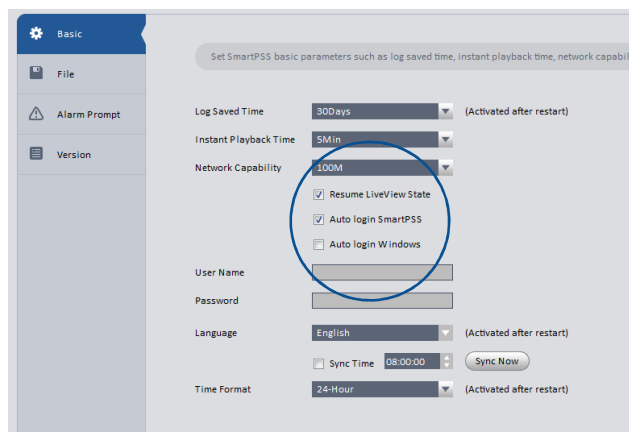
Initiating Live View on Start up

Smart PSS can automatically login and start Liveview mode upon application start up.

- 1) From the home page select the “General” menu located under “Settings”

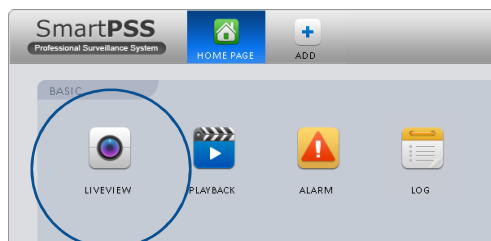


- 2) Ensure the checkbox corresponding to “Resume LiveView State” and “Auto login SmartPSS” are selected. Select Save in the bottom right corner.

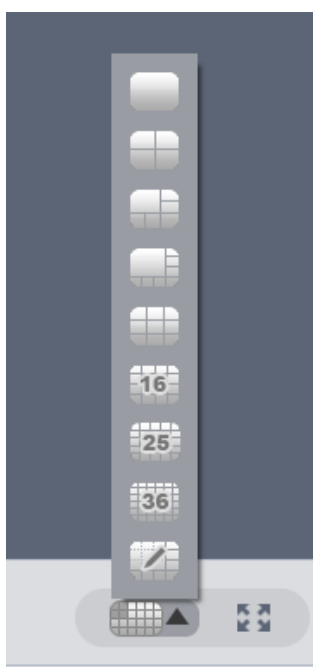


Exporting Footage

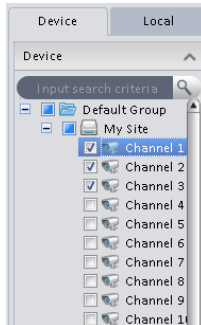
- 1) From the home page select the “Playback” menu.



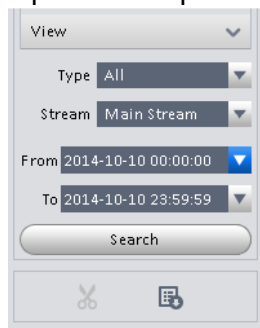
- 2) Before reviewing footage select the view you wish to use. You may select a view of one camera to a view of thirty six cameras on one screen at any time.



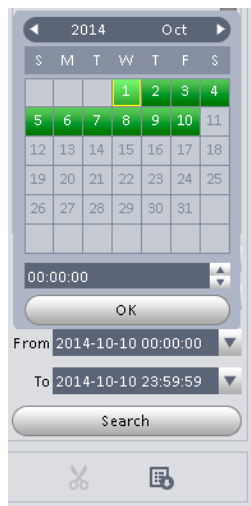
- 3) From the device menu on the right of the screen, simply select the checkbox corresponding to the cameras you would like to review.



- 4) Open the drop down menu to select dates in which you would like to review footage for.

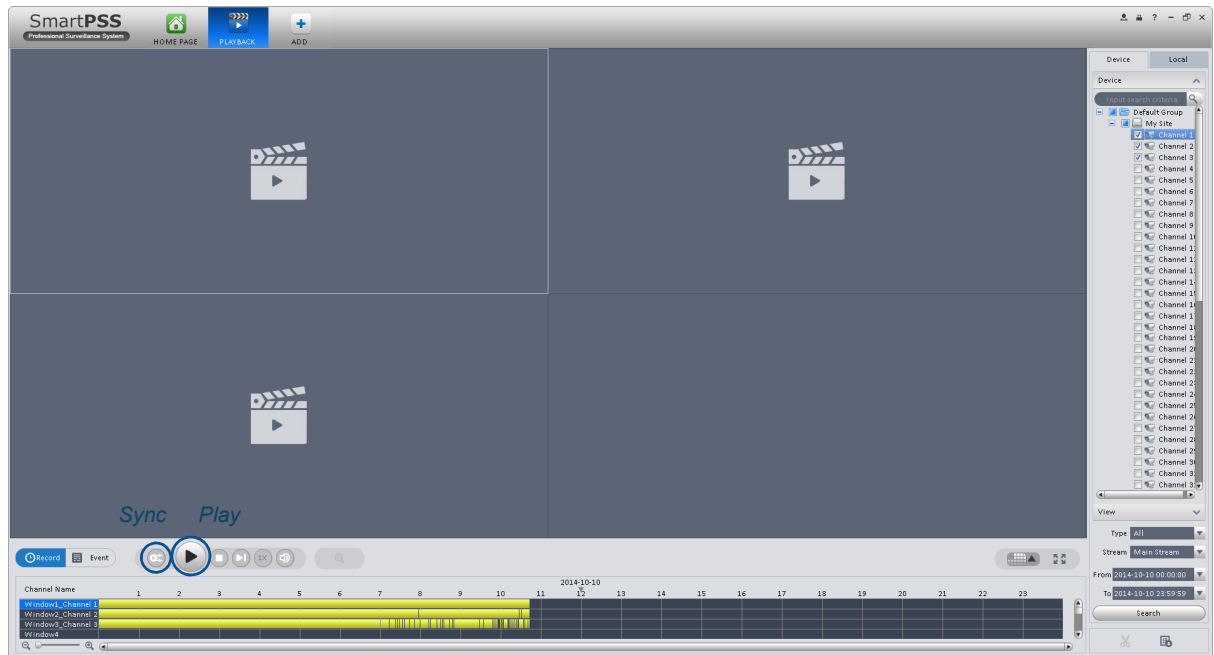


- 5) The pop up menu displays a calendar view. Days highlighted green indicate days in which footage is available for retrieval for the cameras selected.



- 6) Once you have selected the cameras you wish to review and the time period simply select “Search” Once searching is complete the cameras you selected will show in the timeline.

Note: The search time will depend on the amount of cameras you have selected and the time period of review.

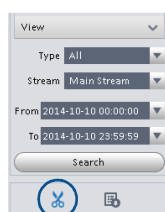
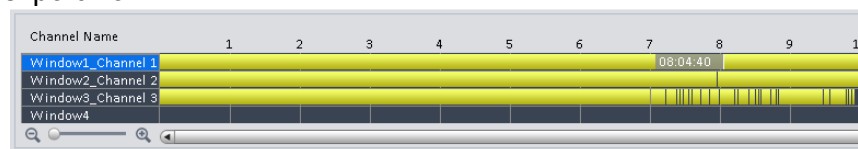


- 7) To review footage select the “Play’ button above the timeline. To review multiple cameras at once simply select the “Sync” button.

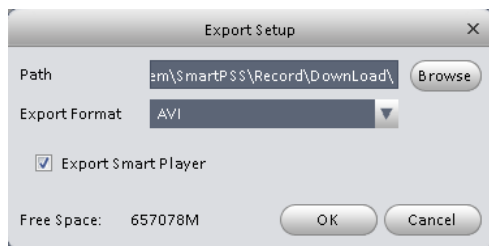
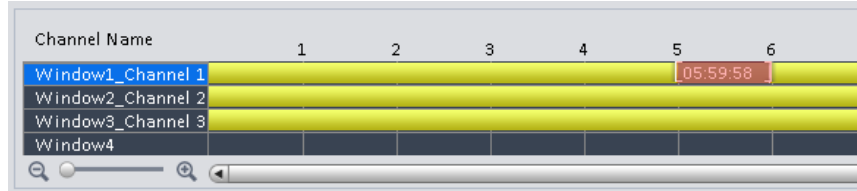
Tip: You may select anywhere along the timeline to start playback from that time that you have selected.

Tip: Use the zoom icons in the bottom left hand corner to zoom in on the timeline and change the time scale.

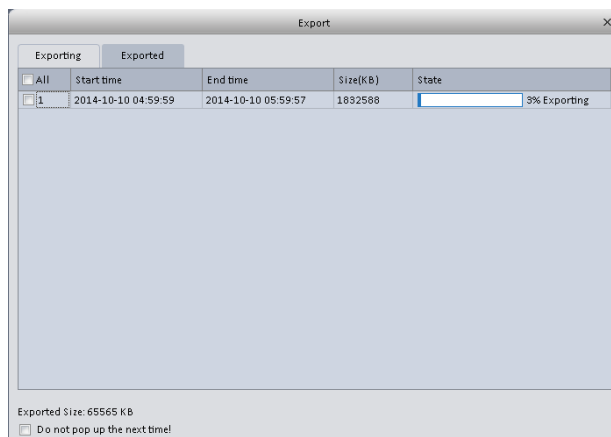
- 8) To export footage select a starting point along the timeline and select the “Time Clip” icon in the bottom right of the screen. This selects where you would like to start the export from.



- 9) Select a second point along the timeline to select the end time of the export. Once a start and end time have been selected the period will display red and the export setup window will appear.



- 10) Select the browse icon to browse to a location where you would like to export the footage to (E.g. My Documents or a USB memory stick) and select OK.
- 11) The below Export dialogue box will appear displaying the progress of your export.



Once the export is complete simple browse to the folder selected and view the file.